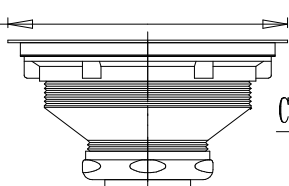
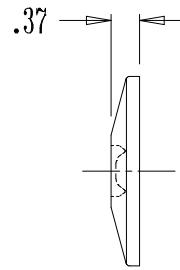


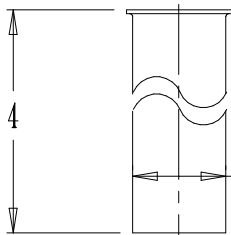
Ø 4.52



CAST BRASS STRAINER

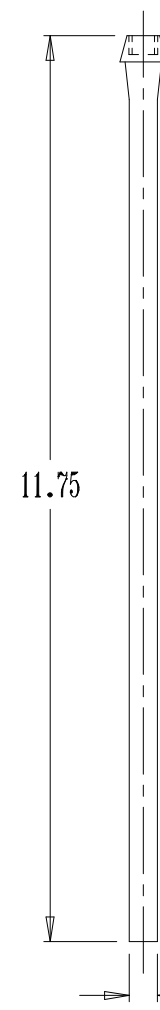


SHALLOW FLANGE
(1/2 COPPER TUBE)
(2 PCS.)



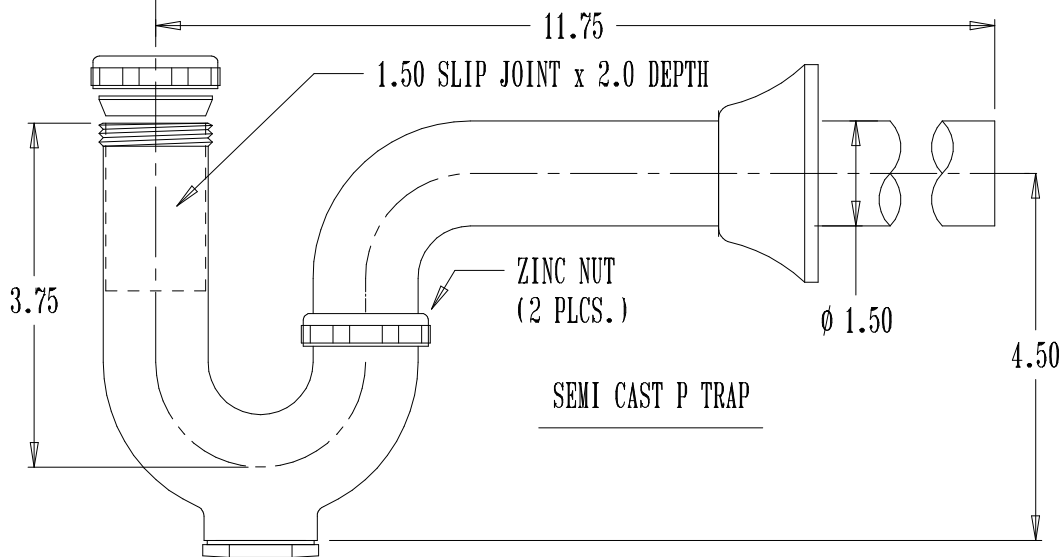
TAILPIECE

Ø 1.50



11.75

Ø .375



1.50 SLIP JOINT x 2.0 DEPTH

ZINC NUT
(2 PLCS.)

SEMI CAST P TRAP

3.75

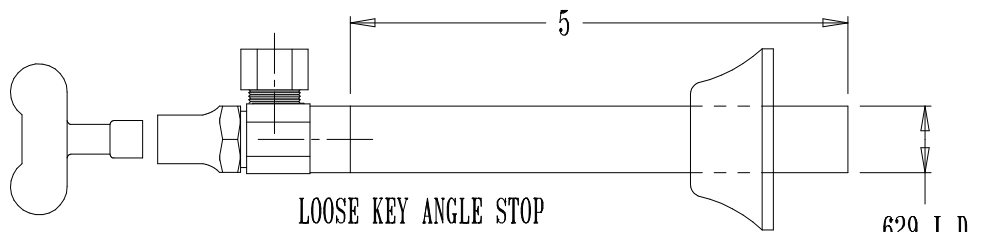
11.75

4.50

NOTES:

- 1. ALL DIMENSIONS ARE IN INCHES.
- 2. FINISH: CHROME PLATE

SUPPLY RISER TUBE
(2 PCS.)



LOOSE KEY ANGLE STOP
(1/2 SWEAT X 3/8 O.D. COMPRESSION)
(2 PCS.)

.629 I.D.

THE KEENEY MANUFACTURING COMPANY
NEWINGTON, CT

TITLE: MASTERKIT - SINK KIT P/N:MK-510

DWG BY: M. KURO DATE: 4/25/06 SCALE: SHOWN