

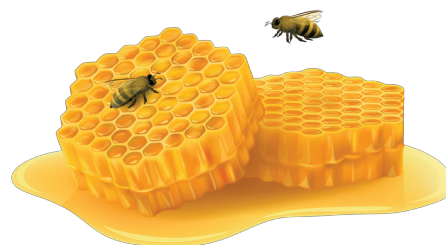


# Wax Gaskets

**Assorted Gaskets and Kits From  
The Keeney Manufacturing Company**  
*"Revolutionary Plumbing Solutions Since 1923"*



- ***New offering to the Keeney line***
- ***Industry approved, meets or exceeds all specifications***
- ***Fits 3" or 4" waste lines***
- ***Non corrosive brass bolts in K836-3 & K836-4***
- ***Honey yellow color***

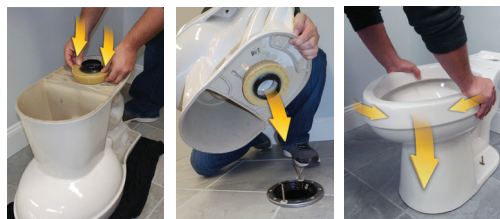


THE KEENEY  
MANUFACTURING COMPANY  
1170 Main Street  
Newington, CT 06111  
1-800-243-0526  
[www.keeneymfg.com](http://www.keeneymfg.com)  
email: [ncs@upt.com](mailto:ncs@upt.com)





# Wax Gaskets For Toilets



### Directions:

- Remove old wax gasket with putty knife
- When all surfaces are dry and free of any debris, remove wax gasket and place on toilet anchor flange.
- Set toilet bowl in place over closet bolts.
- To create best seal, gently press down and wiggle toilet bowl from side to side.
- Tighten flange bolts, carefully.  
DO NOT OVERTIGHTEN.

**PERFECT ADDITION**  
TO OUR WAX GASKET LINE











[www.keeneymfg.com/ezinstall](http://www.keeneymfg.com/ezinstall)

### Description:

Heavy duty wax gaskets for use with 3" or 4" waste lines. Wax ring for toilet bowl setting to be constructed of non hazardous petrolatum. Wax gaskets with sleeve shall have a plastic polyethylene flange (in alignment with bowl) to extend discharge opening. Bolts shall be all brass construction.

### Specifications:

- **Federal Spec TT-P-1536A** - Industry Approval
- Specific Gravity 0.84-0.88
- Appearance Honey Yellow
- Shelf Life 2 years from manufacture
- Melting Point 145° F- 163° F

Part number Description	Package	Pack
 <b>K836-1</b> Wax Gasket		48
 <b>K836-2</b> Extra Thick Wax Gasket		24
 <b>K836-3</b> Wax Gasket Kit • Solid brass snap-off style bolts included		24
 <b>K836-4</b> Extra Thick Wax Gasket Kit • Extra long solid brass bolts included		24

**Merchandising Display Carton Included**

### Engineer / Architect approval:

Job name \_\_\_\_\_ Date: \_\_\_\_\_  
 Model specified \_\_\_\_\_ Qty: \_\_\_\_\_  
 Wholesaler \_\_\_\_\_  
 Contractor \_\_\_\_\_  
 Architect \_\_\_\_\_



**THE KEENEY  
MANUFACTURING COMPANY**  
 1170 Main Street  
 Newington, CT 06111  
 1-800-243-0526  
[www.keeneymfg.com](http://www.keeneymfg.com)  
 email: ncs@upt.com