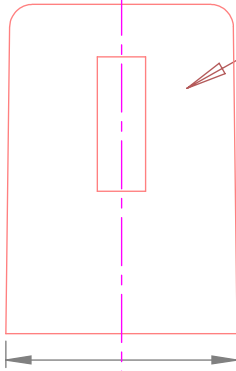
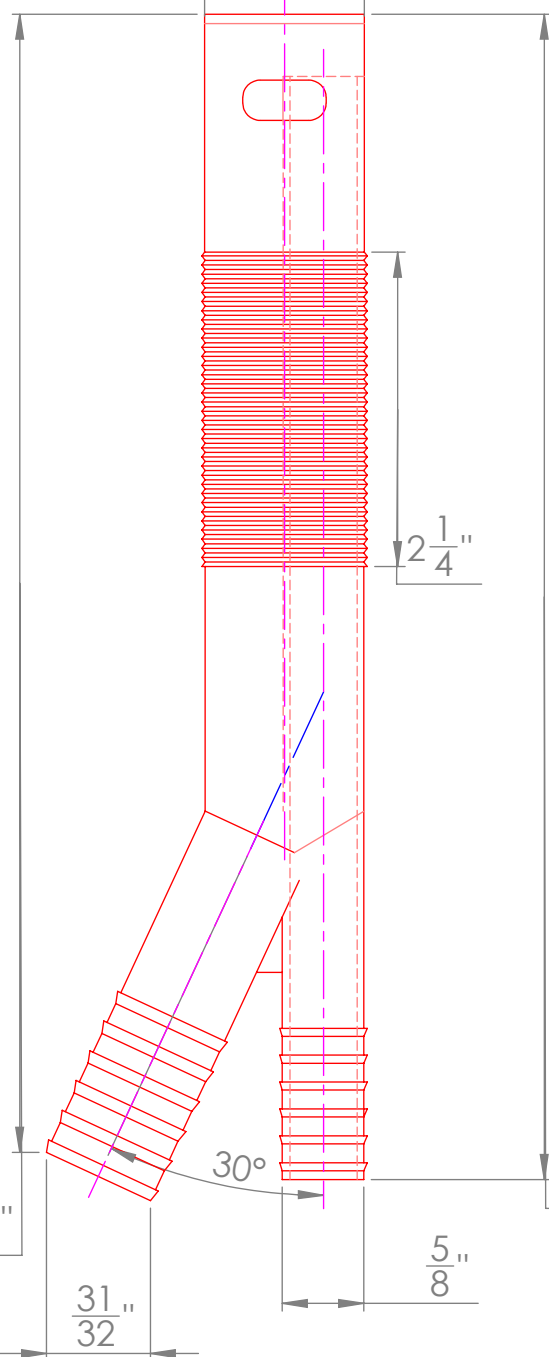


CHROMED PLASTIC COVER



$2\frac{13}{32}$ "

$1\frac{3}{16}$ "



$2\frac{1}{4}$ "

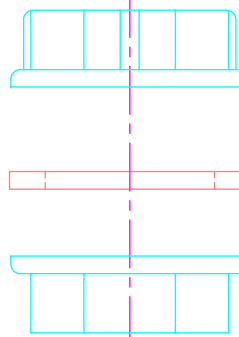
30°

$8\frac{15}{32}$ "

$\frac{31}{32}$ "

$\frac{5}{8}$ "

$8\frac{43}{64}$ "



WASHER

LOCKNUTS (2)

THE KEENEY MANUFACTURING CO.

NEWINGTON, CT. 06111

DISHWASHER AIR GAP PP25570

DWG BY: M.MORQUETTE

DATE: 05/27/15