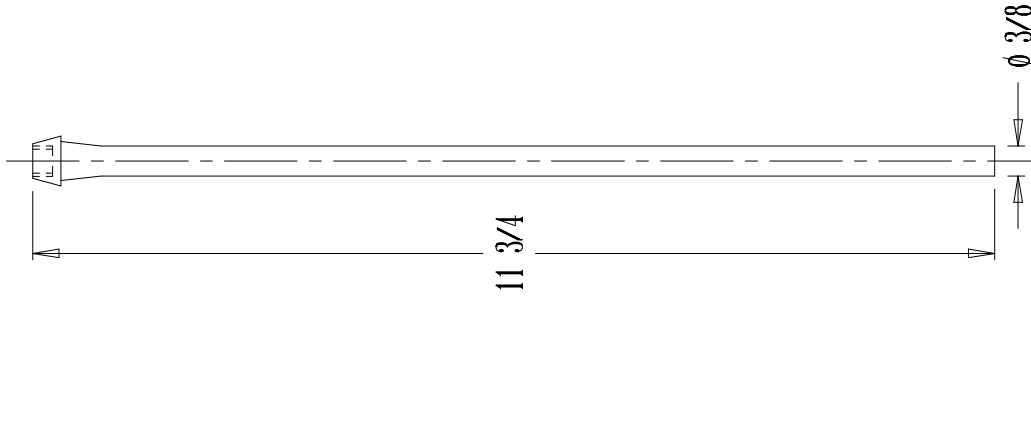


SUPPLY RISER TUBE (X2)



LOOSE KEY

COMPRESSION NUT
& SLEEVE

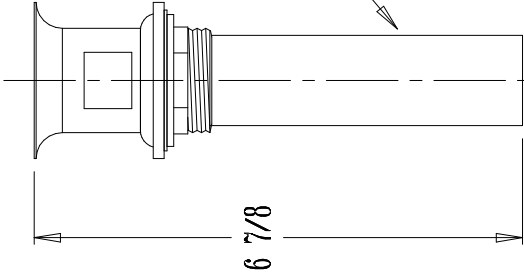
1 1/2

2 1/4

LOOSE KEY ANGLE STOP (X2)
(1/2 SWEAT X 3/8 COMPRESSION)

1/2" COPPER SWEAT

PO PLUG



6 7/8

11 3/4

RED TAPERED RUBBER
WASHERS (2 PLCS)

SEMI CAST P TRAP

3 3/4

1 1/2 SLIP JOINT x 2 DEPTH

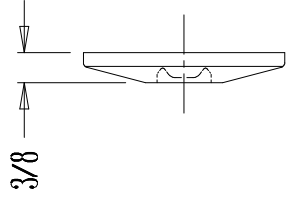
ZINC NUT
(2 PLCS.)

2 1/4 SEAL

$\phi 1 1/2$

4 1/2

SHALLOW FLANGE (X2)
(1/2 COPPER TUBE)



3/8

17GA 1 1/4 DIA. TAILPIECE

NOTES:

1. ALL DIMENSIONS ARE IN INCHES.
2. FINISH: CHROME PLATE

THE KEENEY MANUFACTURING COMPANY
NEWINGTON, CT

TITLE: MASTERKIT - LAVATORY TRIM	P/N: MK-501LF
DWG BY: RKH	DATE: 8/29/13
SCALE: SHOWN	